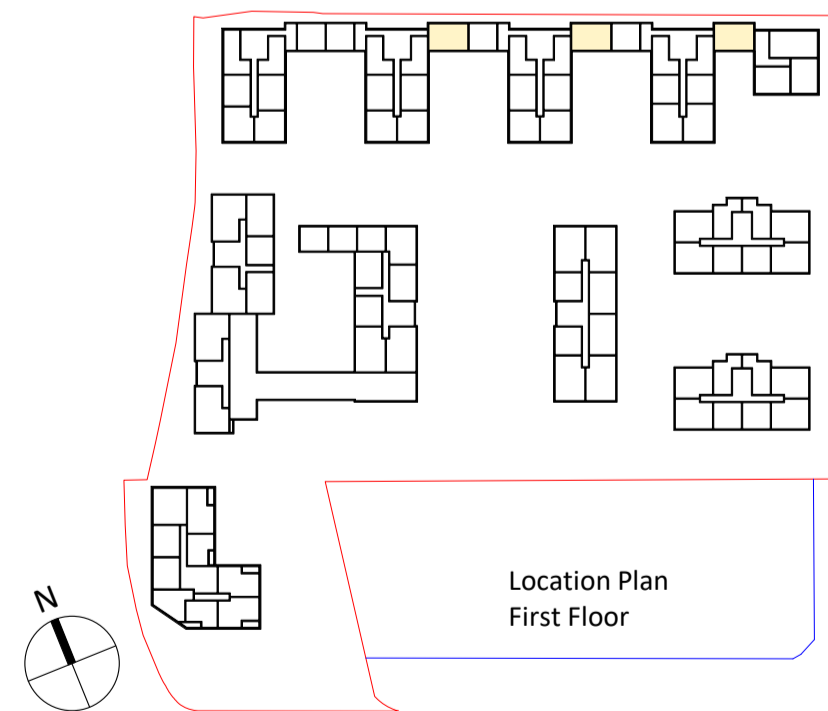
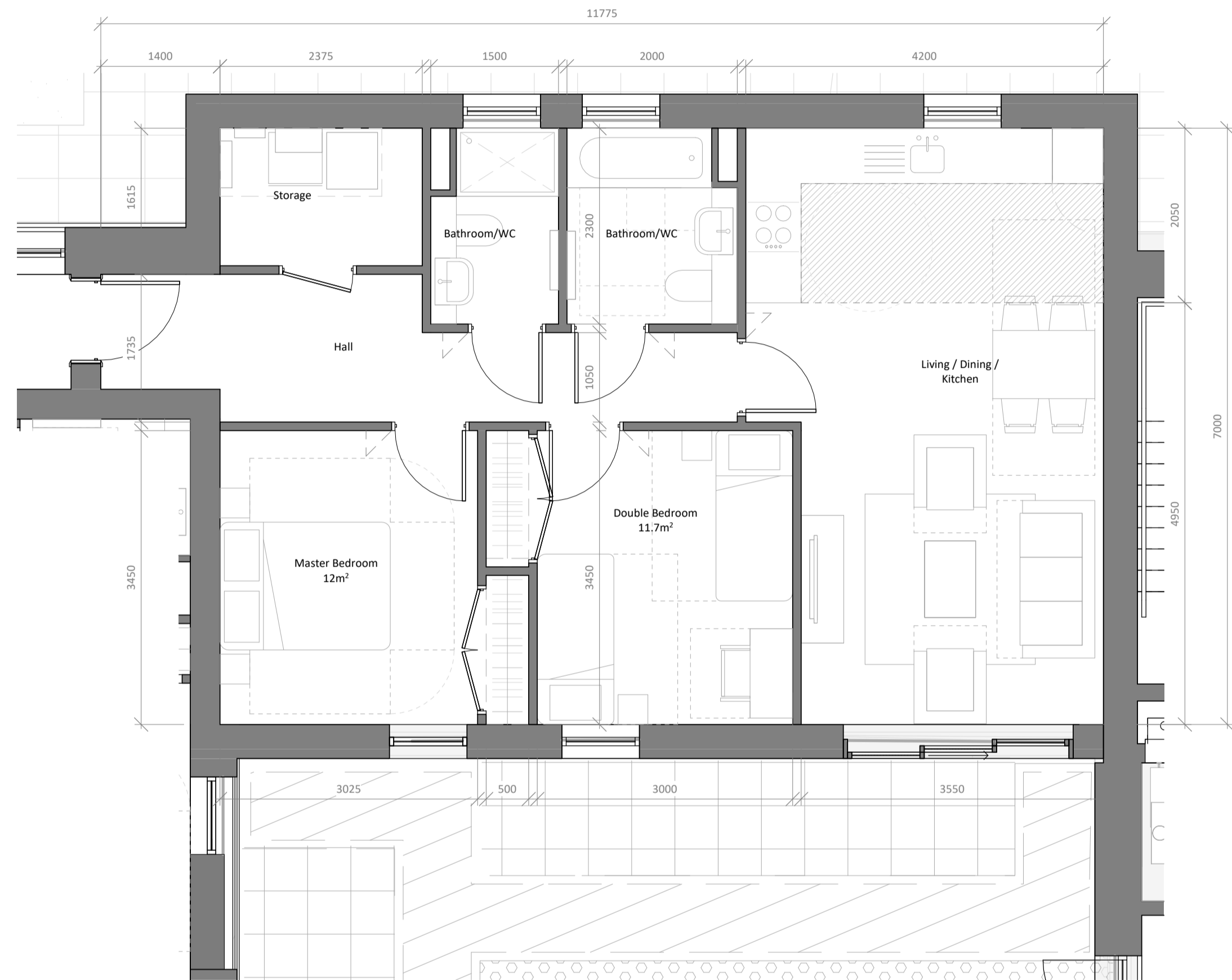


1 : 50



Block	Unit Number	Level	Plot Number	Area (m <sup>2</sup> )	Area (ft <sup>2</sup> )	Tenure	Amenity Type	Amenity Area (m <sup>2</sup> )
5	502.06	Level 2	13	75.9	817	Affordable	Balcony	
5	504.06	Level 3	20	75.9	817	Affordable	Balcony	
5	504.06	Level 4	27	72.6	782	Affordable	Balcony	

6	601.07	Level 1	8	74.5	802 Market	Garden	
6	602.06	Level 2	15	74.5	802 Market	Balcony	
6	602.07	Level 2	16	74.5	802 Market	Balcony	
6	603.06	Level 3	23	74.5	802 Market	Balcony	
6	603.07	Level 3	24	74.5	802 Market	Balcony	
6	604.06	Level 4	31	72.6	782 Market	Balcony	
6	604.07	Level 4	32	72.6	782 Market	Balcony	

7	701.07	Level 1	8	74.5	802	Market	Garden	
7	702.06	Level 2	15	74.5	802	Market	Balcony	
7	702.07	Level 2	16	74.5	802	Market	Balcony	
7	703.06	Level 3	23	74.5	802	Market	Balcony	
7	703.07	Level 3	24	74.5	802	Market	Balcony	
7	704.06	Level 4	31	72.6	782	Market	Balcony	
7	704.07	Level 4	32	72.6	782	Market	Balcony	

8	801.07	Level 1	9	74.5	802 Market	Garden	
8	802.06	Level 2	16	74.5	802 Market	Balcony	
8	802.07	Level 2	17	74.5	802 Market	Balcony	
8	803.06	Level 3	24	74.5	802 Market	Balcony	
8	803.07	Level 3	25	74.5	802 Market	Balcony	
8	804.06	Level 4	32	72.6	782 Market	Balcony	
8	804.07	Level 4	33	72.6	782 Market	Balcony	

Grand total: 24

1,777.8	19,136
---------	--------

19,136

### Part M4(2) DESIGN CHECKLIST

### Circulation areas and internal doorways

Door and hall width:

1. Minimum clear width of any hall or landing is 900mm.
2. Localised obstructions should be no longer than 2m and not occur at a change in direction or be opposite or close to doorways. Halls should not be reduced to 750mm width at any point.
3. Door widths relate to corridors and direction and meet Part M Table 2.1.
4. A minimum 300mm nib is provided to the leading edge of all inward opening doors in the entrance storey.

### Private stairs

1. Access to all rooms and facilities within the entrance storey is step free.
2. Level changes within other storeys are avoided.
3. Stair from entrance storey to other floors has a minimum clear width of 850mm (measured at 450mm above pitch line)
4. All stairs meet requirements for Part K for private stairs.

**Habitable rooms**

Living, kitchen and eating areas:

1. Within the entrance storey, provide a living area (living, dining room or combined kitchen and dining room).
2. A minimum 1200 clear space is provided in front of and between all kitchen units and appliances.
3. Glazing to the principal window of the principal living area starts at a maximum of 850mm above FFL or at the minimum height necessary to comply with Part K for guarding.

### Bedrooms

1. A clear access route of 750mm is required from doorway to window.
2. A least one double bedroom (principal) has a clear access zone, minimum 750mm wide, to both sides of the bed and the foot.
3. All double bedrooms have clear access zone, minimum 750mm wide, to one side of the bed and the foot.
4. All single and twin bedrooms have clear access zone, minimum 750mm wide, to one side of the bed.
5. Bed sizes should be as Part M Appendix D, large double 2000 x 1500, double 1900 x 1350 and single 1900 x 900mm.

## WC

WC facilities at entrance storey should comply with the following:

1. A room at entrance level which provides a WC and basin, this could be part of a bathroom.
2. In a 2 or 3 storey dwelling (1 or 2 bedrooms) the WC meets Part M diagram 1.3/1.4 and the wash basin does not impede the WC.
3. In a 2 or 3 storey dwelling (3 or more bedrooms) the room with the WC also provides a level access shower (or the potential for level access shower) and it meets Part M diagram 2.5/2.6.
4. The door opens outwards.

### Bathroom

The bathroom should comply with the following:

1. Every dwelling has a bathroom that contains a WC, basin and bath on the same floor as the principal bedroom.
  2. The bathroom must meet the provision of Part M diagram 2.5/2.7
  3. Provision for a level access shower is made within the bathroom if not provided elsewhere within the dwelling.
  4. Grab rails, seats and other adaptations to bathrooms are capable of supporting a load of 1.5kN/m<sup>2</sup> within the relevant WC/cloakroom, bathroom and shower room.
- Note: there may still be the need for additional support if high point load equipment is needed.

### Services and controls

To assist people who have reduced reach, services and controls should comply with the following:

1. Consumer unit that switches are between 1350 – 1450mm above FFL.
2. Switches, sockets, stopcocks and controls have their centre lines between 450 – 1200mm above FFL.
3. The handle of at least one window in the principal living area is located between 450 – 1200mm above FFL, unless fitted with a remote control within this range.
4. Boiler controls should be either mounted between 900 – 1200mm above FFL or separate wired or wireless controls are provided elsewhere.
5. Radiators and cooker hoods are exempt from this.

The internal layouts within apartments will be subject to design development. The precise location of walls and internal doors, and the detailed layout of the bathroom and kitchen areas will be subject to non-material changes and may vary from the internal layouts set out in these plans. These minor alterations will not affect the position and arrangement of external doors and windows nor will these affect the relative relationship between habitable rooms and windows.

## NOTES

## CONSULTANTS

- Refer to highways consultant's drawings for details
- Refer to landscape consultant's drawings for details
- Landscaping layout is indicative only

## AREAS

- Refer to area schedule

[illegible]

VISUAL SCALE 1:50 @ A1

17-19 Foley Street  
London W1W 6DW  
T 020 7580 3490  
F 020 7580 2917  
info@colladocollins.com  
www.colladocollins.com

Date: 17/02/20  
Drawn By: OT  
Checked by: JBC  
Scale @ A1: As indicated  
Scale @ A3:  
CAD File No:

Inland Homes  
Hillingdon  
Dwelling Type 2B4P-03

PLANNING  
19011

P4-2403

P1  
Revision